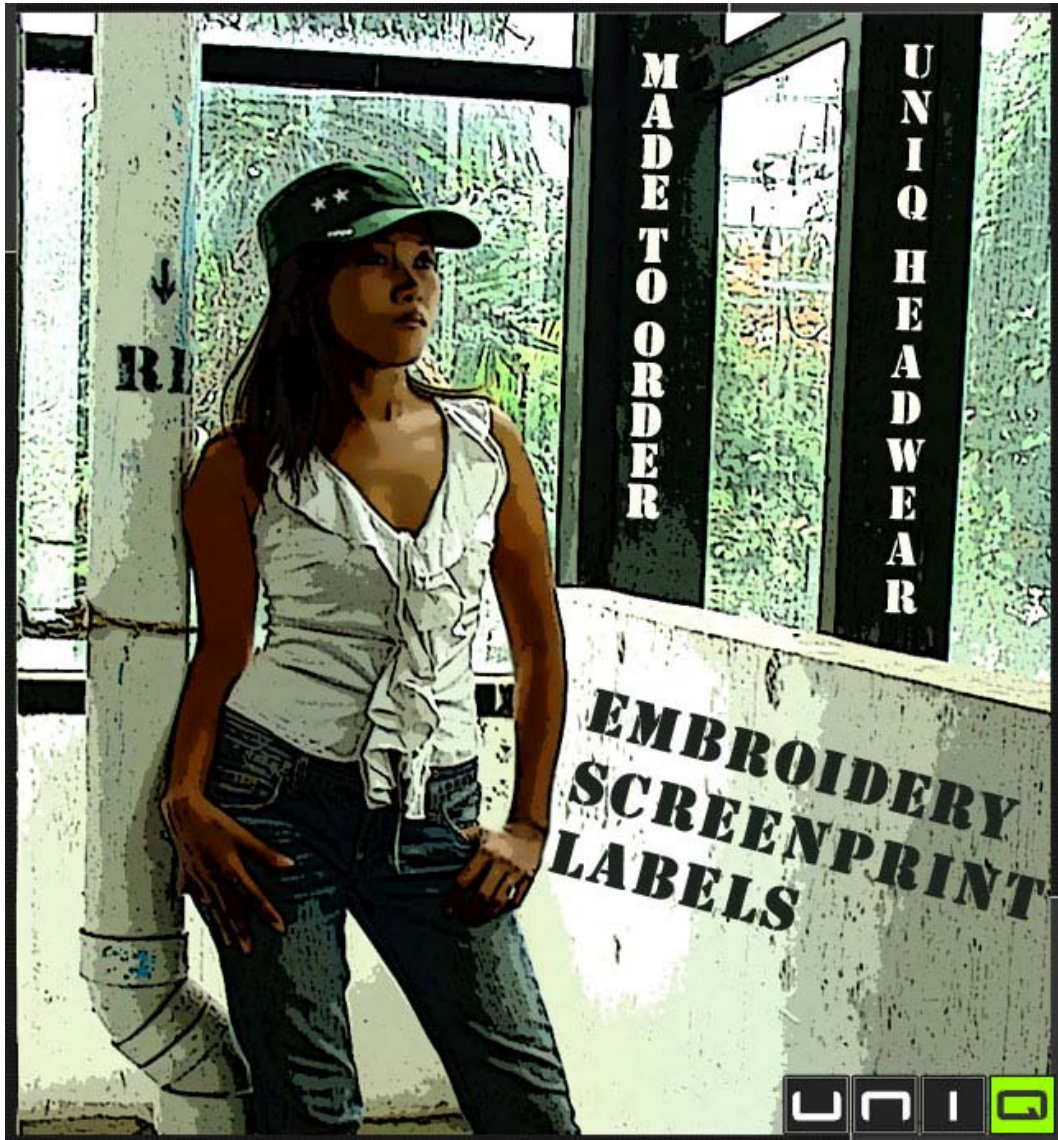


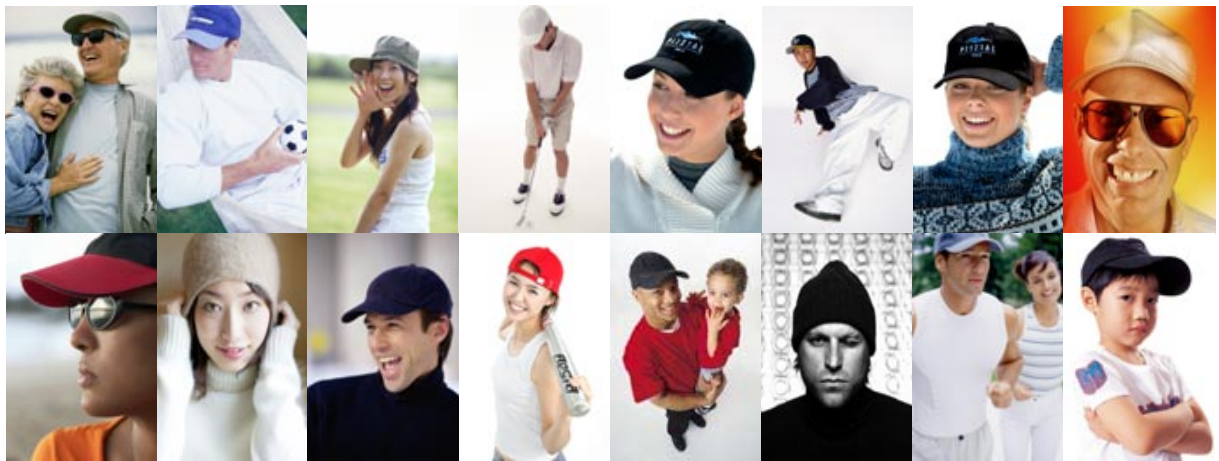
UNIQ HEADWEAR BROCHURE



Last Update: February 2006

Table of Contents

INFORMATION	
Order Process - Price	Page 03
Colour Swatch	Page 15 - 17
Size Specification	Page 18
Backside closing	Page 18
Embroidery – Screen Print – Label	Page 19
HEADWEAR PRODUCTS	
Cap	Page 4 - 9
Visor	Page 11
Beanie - Knit Cap	Page 12
Bucket Hat	Page 13
More Headwear	Page 14



UNIQ Headwear in several sizes, colours and styles - suitable for all ages

New & Hot Trucker Caps available with your logo, prints:



Product ID CAP-TRUCK1



Product ID CAP-TRUCK2

ORDER PROCESS - PRICE

ORDER PROCESS



1. Choose **Product ID**
2. Choose your own **Colour Combinations** for headwear and your logo etc. (page 15)
3. Choose your **Size** (page 18)
4. Choose **Backside Closing** (page 18)
5. Choose your **Embroidery, Print Screen, Label** or any other special request (page 19)
(In House designers can help you with your idea, request)

and send E-mail request with any available digital logos, images and questions etc. to
E-Mail: a@uniq.biz

PRICE – MADE TO ORDER (customized caps)



Price including logo

100-299 pieces: ***approximate USD 5-8/pc**
over 300 pieces: 15% discount

- *Final price depends on your chosen headwear, colours, fabric and logo size, colours needed
- Including embroidery logo (or silk screen) & artwork help (if needed)

Minimum order

- 100 pieces (some styles higher)
- Some headwear are in stock, please check with us

Leading time

- average 2-4 weeks

Quality – Price Value

- Several qualities, fabrics for your budget available.
- If not requested otherwise, we choose the best fabric in best quality for your production.

Profit from our outstanding price value.

CAP



Made to Order caps

- Some are available in stock (stock changes often), contact us
- For **Made To Order choose cap style** below or send us your dream cap
- Available in several qualities: read below



Product ID CAP-CLASSIC1



Product ID CAP-COMB1



Product ID CAP-STRIFE1



Product ID CAP-GOLF1



Product ID CAP-CLASSIC2



Product ID CAP-COMB2



Product ID CAP-PORT1
Fan Cap with other country flags, colours available



Product ID CAP-COMB3



Product ID CAP-COMB4



Product ID CAP-COMB5



Product ID CAP-COMB6



Product ID CAP-MESH1



Product ID CAP-MICRO1



Product ID CAP-COMB7



Product ID CAP-MESH2



Product ID CAP-CLASSIC3



Product ID CAP-CASUAL1



Product ID CAP-CLASSIC4



Product ID CAP-CASUAL2



Product ID CAP-RACE1



Product ID CAP-GREY1



Product ID CAP-BASEB1



Product ID CAP-CLASSIC5



Product ID CAP-SANDW1



Product ID CAP-CLASSIC6



Product ID CAP-FAN1



Product ID CAP-ULTRA1



Product ID CAP-FAN2
Fan Cap with other country flags, colours available



Product ID CAP-SPEC1



Product ID CAP-COMB8



Product ID CAP-BRA1



Product ID CAP-BRA2
Fan Cap with other country flags, colours available



Product ID CAP-BRA3



Product ID CAP-BRA4



Product ID CAP-ENG1



Product ID CAP-SPEC2



Product ID CAP-SPEC3



Product ID CAP-ENG2



Product ID CAP-SCOR1



Product ID CAP-MIL1



Product ID CAP-DRA1



Product ID CAP-SPEC3



Product ID CAP-SPEC4



Product ID CAP-CLASSIC7



Product ID CAP-CLASSIC8



Product ID CAP-SANDW2



Product ID CAP-MESH3



Product ID CAP-FLAME1



Product ID CAP-FLAME2



Product ID CAP-FLAME DE 3



Product ID CAP-FLAME4



Product ID CAP-FLAME5



Product ID CAP-SANDW3



Product ID CAP-CLASSIC9



Product ID CAP-SANDW4



Product ID CAP-SPEC5



Product ID CAP-COMB9



Product ID CAP-CLASSIC10



Product ID CAP-CORD1



Product ID CAP-CORD2



Product ID CAP-CORD3



Product ID CAP-DENIM1



Product ID CAP-DENIM2



Product ID CAP-SUN1



Product ID CAP-SAHARA1



Product ID CAP-SAHARA2

Any logos shown above are the properties of their registered owners



MTO

Made to order in several styles, colours, embroidery, screen print & label
Possible with your design idea, logo, team colours, print etc. request

Fabrics

Cotton 60x60, 68x38, 74x44, brushed & combed Cotton, Manchester, Wool Acrylic blend, T/C Twill, Cotton Twill, Polyester, incorporated Mesh or Micro fibre, Corduroy

New: Trucker Caps and washed cotton twill

also available with wrecked retro look (partial scarved cotton)

Airholes

some with grommets

Backside

page 18

Colours

Dyed in nearly any colour combination: page 15

Panels

1-6 Panels

Minimum order quantity

100-300 pieces (depends on chosen style, colour request)

CAP UEGA

© www.uega.ch

- Unisex cult, Cuban style & cut cap (see also page 1)

- All Product ID's are available for made to order

UEGA



PRODUCT ID CAP-UEGA

Cap in UEGA pattern (cut & style)



PRODUCT ID CAP-CLASSIC

Cap with "UEGA" embroidery



PRODUCT ID CAP-BRAND

Cap with screen print "UEGA"



PRODUCT ID CAP-STAR

Cap with embroidery "UEGA & 2 stars"



PRODUCT ID CAP-CHE

Screen print or embroidery "Che Guevara"



PRODUCT ID CAP-UMTO

Screen print or embroidery with "Your Logo"

Combine your requested fabric & visor colours with embroidery, print screen and your labels:



Product ID CAP-U CLASSIC
white fabric & pink embroidery



Product ID CAP-U CLASSIC
dark navy fabric & dark navy embroidery



Product ID CAP-U BRAND
tuffet fabric & white screen print



Product ID CAP-U BRAND
dark navy fabric & dark red screen print



Product ID CAP-U BRAND
caviar fabric & orchid tint screen print



Cap Design
MTO
Minimum order quantity
Price
Order

© www.uega.ch
Made to order with many colours, print & embroidery
100 pieces
On request
sales@uega.ch or a@uniq.biz

VISOR



Made to Order Visor

- Some are available in stock (stock changes often), contact us
- For **Made To Order** choose visor style below or send us your dream visor
- Sandwich and sweatbands
- Fabrics: Cotton Twill, Polo Twill, brushed heavy Cotton, Polyester & Cotton



Product ID VIS-SPORT1 *



Product ID VIS-SPORT2 *



Product ID VIS-SUN1



Product ID VIS-CLASSIC1



Product ID VIS-LADY1 *



Product ID VIS-CLASSIC1



Product ID VIS-LADY2



Product ID VIS-HAWAII



Product ID VIS-SPIRIT1

Any logos shown above are the properties of their registered owners

BEANIE - KNIT HAT



Product ID BEA-CLASSIC1

Made to Order Beanie & Knit Cap

- For **Made To Order** choose **Beanie style** below or send us your dream beanie or knit hat

- Wool Acrylic, Acrylic, Micro Fleece



Product ID BEA-CLASSIC2



Product ID BEA-BRA1 *
Fan Beanie with other country flags, colours available



Product ID BEA-CLASSIC3 *



Product ID BEA-CLASSIC4 *



Product ID BEA-CLASSIC5



Product ID BEA-CLASSIC6



Product ID BEA-CLASSIC7



Product ID BEA-CLASSIC8 *



Product ID BEA-FUN1 *

Any logos shown above are the properties of their registered owners

BUCKET HAT



Product ID BUC-CLASSIC1

Made to Order Bucket Hat
also called Fisherman or Bob Hat

- For **Made To Order choose style** below or send us your dream bucket hat
- Brushed cotton, Enzyme Washed, Mesh Eyelets



Product ID BUC-CLASSIC1



Product ID BUC-COMFY1



Product ID BUC-COMFY1



Product ID BUC-BAND1



Product ID BUC-BAND2



Product ID BUC-CLASSIC2



Product ID BUC-CLASSIC3



Product ID BUC-CLASSIC4



Product ID BUC-SW11
Fan Hat with other country flags, colours available

Any logos shown above are the properties of their registered owners

MORE HEADWEAR



Product ID VAR-ENG1
100% Cotton Twill



Product ID VAR-SUNHAT1
100% Cotton



Product ID VAR-FOOTY1
100% Cotton



Product ID VAR-AUS1
Polyester & Cotton



Product ID VAR-AUS2
Canvas



Product ID VAR-AUS3
Canvas



Product ID VAR-POLAR1
Micro Fleece



Product ID VAR-POLAR1
Micro Fleece



Product ID VAR-KNIT1



Product ID VAR-CLASSIC1
Palm Straw



Product ID VAR-CLASSIC2
String Straw



Product ID VAR-CLASSIC3
Palm Straw

Any logos shown above are the properties of their registered owners

COLOUR SWATCH

Colour Swatch

Caps – Headwear
100% cotton twill

Colour Code TC
Pantone

Pantone19-4039 TC
Colour Name: delft
HTML 3D5E8E

- Additional colour codes are available on request: LAB (iLAB), XYZ (iXYZ)

Nr 5
Pantone19-3940 TC
blue depths
HTML 263055

Nr 6
Pantone 15-1217 TC
mojave desert
HTML C9B796

Nr 7
Pantone 16-1106 TC
tuffet
HTML A59987

Nr 8
Pantone 17-1022 TC
kelp
HTML 9C8A66

Nr 1
Pantone 11-0601 TC
bright white
HTML F4F3EE

Nr 3
Pantone 19-4013 TC
dark navy
HTML 2D2F37

Nr 9
Pantone 19-3803 TC
plum kitten
HTML 62585E

Nr 2
Pantone19-4006 TC
caviar (nearly black)
HTML 2A2926

Nr 4
Pantone 19-4024 TC
dress blues
HTML 293041

Nr 10
Pantone 19-4014 TC
ombre blue
HTML 464A55

Nr 11
Pantone 19-3712 TC
nightshade
HTML 433748

Nr 17
Pantone 16-3802 TC
ash
HTML A29D9C

Nr 23
Pantone 19-3908 TC
iron
HTML 48454B

Nr 12
Pantone 18-3812 TC
cadet
HTML 696278

Nr 18
Pantone 11-0103 TC
egret
HTML F0EEE2

Nr 24
Pantone 19-0405 TC
beluga
HTML 4B4944

Nr 13
Pantone 19-0417 TC
kombu green
HTML 3E4233

Nr 19
Pantone 13-0907 TC
sand shell
HTML DBCEBC

Nr 25
Pantone 18-5203 TC
pewter
HTML 656565

Nr 14
Pantone 15-4502 TC
silver cloud
HTML BAB3AD

Nr 20
Pantone 13-3802 TC
orchid tint
HTML DDD4DB

Nr 26
Pantone 19-512 TC
darkest spruce
HTML 33403F

Nr 15
Pantone 17-1506 TC
cinder
HTML 8C817B

Nr 21
Pantone 15-3915 TC
kentucky blue
HTML A5B5CF

Nr 27
Pantone 17-1109 TC
chinchilla
HTML A0927C

Nr 16
Pantone 18-4005 TC
steel grey
HTML 6F6E71

Nr 22
Pantone 15-4702 TC
puritan surf
HTML A4ADAB

Nr 28
Pantone 17-1506 TC
cinder
HTML 8C817B

Nr 29
Pantone 18-1664 TC
fiery red
HTML D32023

Nr 35
Pantone 19-1526 TC
chocolate truffl
HTML 612F35

Nr 30
Pantone 18-561 TC
orange
HTML DA361D

Nr 36
Pantone 19-0915 TC
coffee bean
HTML 3F312E

Nr 31
Pantone 18-0513 TC
bungee cord
6C635A

Nr 37
Pantone 19-4039
delft
HTML 3D5E8E

Nr 32
Pantone 18-3927 TC
velvet morning
HTML 61688C

Nr 38
Pantone 19-0405
beluga
HTML 4B4944

Nr 33
Pantone 16-0000 TC
paloma
HTML A09D9A

Nr 34
Pantone 19-4220 TC
dark slate
HTML 455058

TC = TPX (Pantone)

These are our actual Cap fabrics (Twill). Other colours are available.

See also www.sportexport.info/colours.htm: For your textile colour choice you can choose a colour from that colour swatch and we will choose the nearest available fabric colour for you.

SIZE SPECIFICATION



Hat Size US	S-XXL	CM	Inch
6 1/8		49	19 1/8
6 1/4		50	19 1/2
6 3/8		51	19 7/8
6 1/2		52	20 1/4
6 5/8		53	20 3/4
6 3/4		54	21 1/8
6 7/8	S	55	21 1/2
7		56	21 7/8
7 1/8	M	57	22 1/4
7 1/4		58	22 5/8
7 3/8	L	59	23
7 1/2		60	23 1/2
7 5/8	XL	61	23 7/8
7 3/4		62	24 1/4
7 7/8	XXL	63	24 5/8

How To Measure Your Head:

Using a tape measure, measure the widest part of your head, just above the ears and eyebrows, to the nearest size available as above.

BACKSIDE CLOSING

also called fasteners



Velcro (ID C1)

Best in terms of handling



Buckle (ID C2)

Best in terms of sizing



Zip slider (ID C3)

Best in terms of product design

or Flex fit (ID C4)

- not shown here

